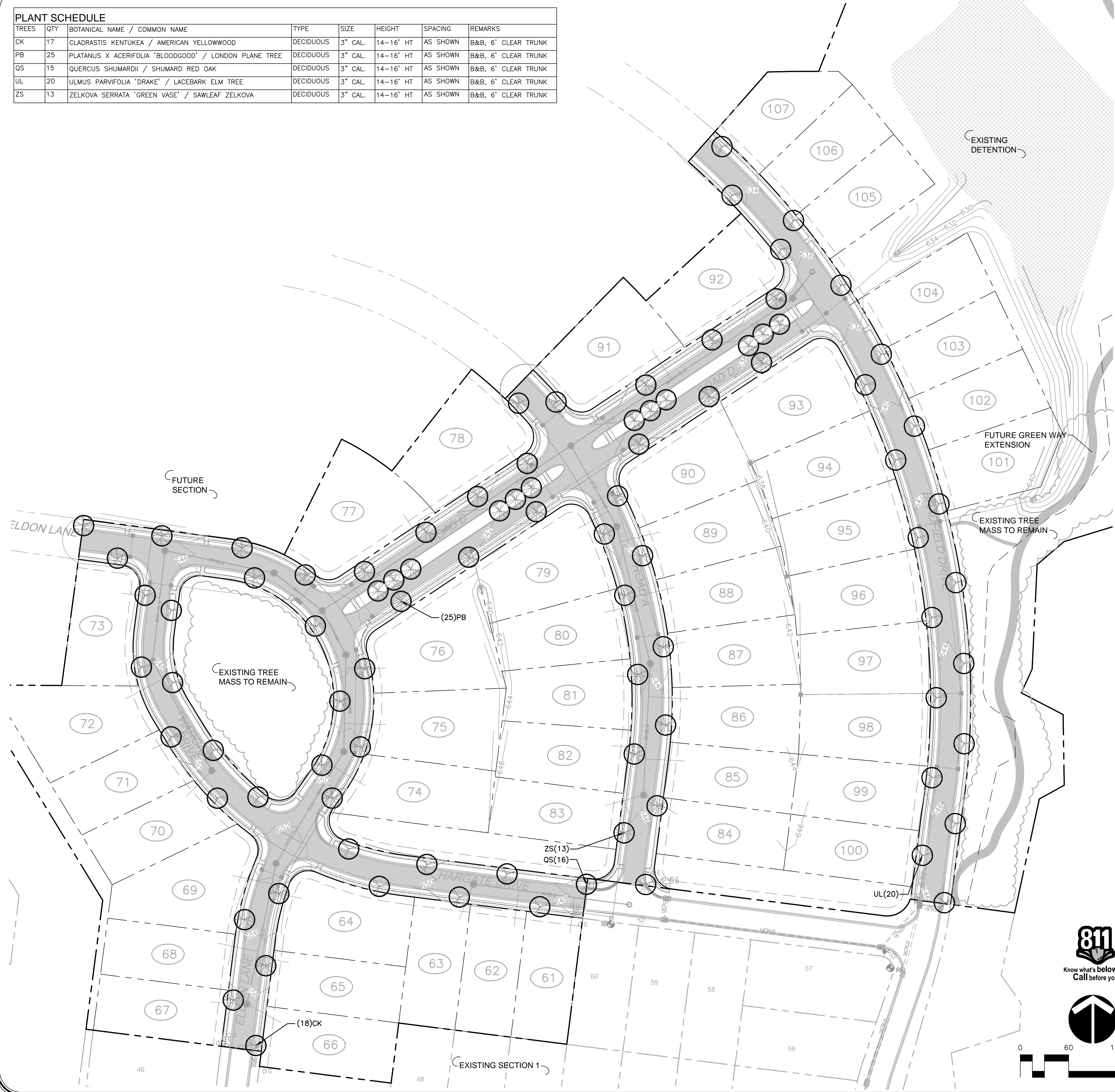
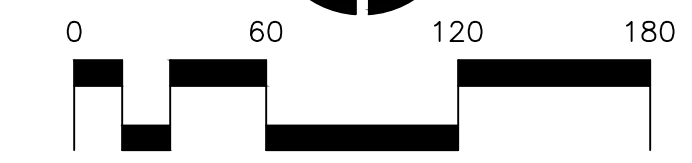
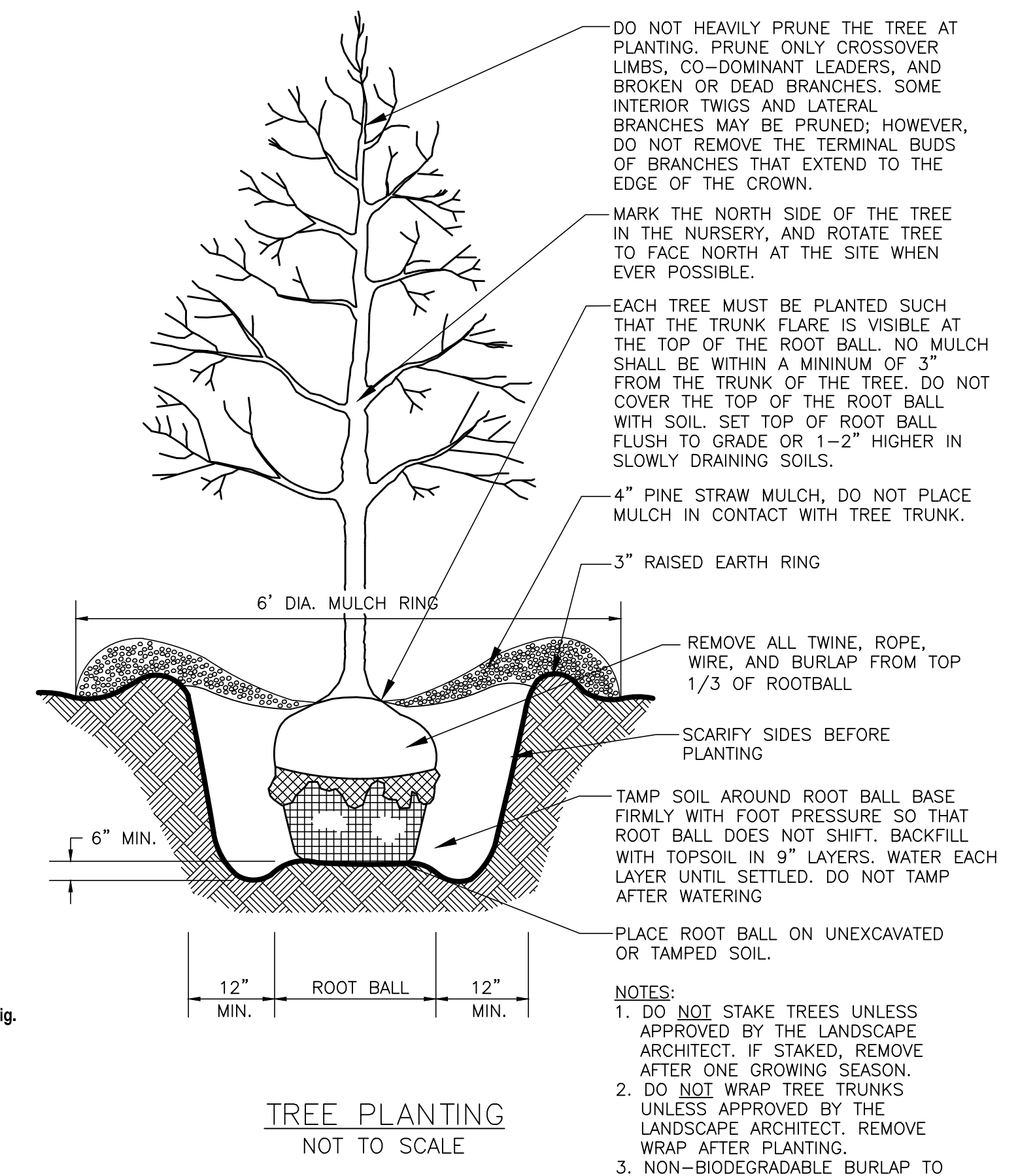


TREES	QTY	BOTANICAL NAME / COMMON NAME	TYPE	SIZE	HEIGHT	SPACING	REMARKS
CK	17	CLADRASITIS KENTUKEA / AMERICAN YELLOWWOOD	DECIDUOUS	3" CAL.	14-16' HT	AS SHOWN	B&B, 6' CLEAR TRUNK
PB	25	PLATANUS X ACERIFOLIA 'BLOODGOOD' / LONDON PLANE TREE	DECIDUOUS	3" CAL.	14-16' HT	AS SHOWN	B&B, 6' CLEAR TRUNK
QS	15	QUERCUS SHUMARDII / SHUMARD RED OAK	DECIDUOUS	3" CAL.	14-16' HT	AS SHOWN	B&B, 6' CLEAR TRUNK
UL	20	ULMUS PARVIFOLIA 'DRAKE' / LACEBARK ELM TREE	DECIDUOUS	3" CAL.	14-16' HT	AS SHOWN	B&B, 6' CLEAR TRUNK
ZS	13	ZELKOVA SERRATA 'GREEN VASE' / SAWLEAF ZELKOVA	DECIDUOUS	3" CAL.	14-16' HT	AS SHOWN	B&B, 6' CLEAR TRUNK



GENERAL NOTES

1. THE CONTRACTOR SHALL LOCATE AND VERIFY THE EXISTENCE OF ALL UTILITIES PRIOR TO STARTING WORK.
2. ALL MATERIAL SHALL CONFORM TO THE GUIDELINES ESTABLISHED BY THE CURRENT AMERICAN STANDARD FOR NURSERY STOCK, PUBLISHED BY THE AMERICAN ASSOCIATION OF NURSERYMEN OR EQUIVALENT. ALL MATERIAL SHALL ALSO CONFORM TO THE SPEEDWAY SPECIFICATIONS SECTION 329200 - TURF & GRASSES AND SECTION 329300 - PLANTS. FOR ANY SPECIFICATION CONFLICTS, THE AMERICAN STANDARD FOR NURSERY STOCK IS THE CONTROLLING SPECIFICATION.
3. IF DISCREPANCIES BETWEEN THE PLAN AND THE PLANT LIST ARE FOUND, CONTACT THE OWNER'S REPRESENTATIVE.
4. THE CONTRACTOR SHALL OBTAIN AND PAY FOR ALL PERMITS AND FEES THAT MAY BE REQUIRED FOR LANDSCAPE PORTION OF WORK.
5. ALL NEW LANDSCAPE PLANTINGS SHALL BE GUARANTEED FOR A PERIOD OF ONE YEAR FOLLOWING FINAL INSPECTION BY OWNER'S REPRESENTATIVE. AT THE END OF THIS PERIOD, PLANT MATERIAL DEEMED AS DEAD OR UNSATISFACTORY BY OWNER'S REPRESENTATIVE SHALL BE REPLACED AT NO ADDITIONAL CHARGE BY THE LANDSCAPE CONTRACTOR.
6. CONTRACTOR SHALL NOTIFY OWNER'S REPRESENTATIVE IN WRITING PRIOR TO BID DATE OF ANY PLANTS THAT THEY FEEL MAY NOT SURVIVE IN LOCATIONS NOTED.
7. PLANTS AND ALL OTHER MATERIALS TO BE STORED ON SITE WILL BE PLACED WHERE THEY WILL NOT CONFLICT WITH CONSTRUCTION OPERATIONS OR GET DAMAGED.
8. NO SUBSTITUTIONS OF PLANT MATERIAL WILL BE ALLOWED. IF PLANTS SHOWN ARE UNAVAILABLE, THE CONTRACTOR SHALL NOTIFY OWNER'S REPRESENTATIVE PRIOR TO BID DATE IN WRITING. ALL PLANTS SHALL BE INSPECTED AND TAGGED WITH PROJECT IDENTIFICATION SHOWING GENUS, SPECIES AND VARIETY AT NURSERY OR CONTRACTORS OPERATION PRIOR TO MOVING TO JOB SITE. PLANTS MAY ALSO BE INSPECTED AND APPROVED OR REJECTED ON THE JOB SITE.
9. LOOSEN SUBGRADE TO A MINIMUM DEPTH OF 4 INCHES. REMOVE STONES LARGER THAN 1 INCH IN ANY DIMENSION AND STICKS, ROOTS, RUBBISH, AND OTHER EXTRANEOUS MATTER AND LEGALLY DISPOSE OF THEM OFF OWNER'S PROPERTY. AFTER REMOVAL OF NOTED ITEMS, AMEND SOIL WITH ONE PART COMMERCIAL GRADE "POTTING SOIL," 5 PARTS TOPSOIL AND 4 PARTS PEAT MOSS. A FULL 4 INCH LAYER OF APPROVED SHREDDED FIBROUS PEAT MOSS MAY BE USED IN LIEU OF PLANTING MIX.
10. ALL PLANTS, INCLUDING TREES, SHRUBS, GROUND COVER, AND FLOWERS, SHALL BE BALLED AND WRAPPED OR CONTAINER GROWN. NO CONTAINER GROWN STOCK WILL BE ACCEPTED IF IT IS ROOT BOUND. ALL ROOT WRAPPING MATERIAL MADE OF SYNTHETICS OR PLASTICS SHALL BE REMOVED AT TIME OF PLANTING. WITH CONTAINER GROWN STOCK, THE CONTAINER SHALL BE REMOVED AND THE CONTAINER BALL SHALL BE CUT THROUGH THE SURFACE IN TWO VERTICAL LOCATIONS.
11. GROUND COVER AND FLOWERS SHALL BEAR THE SAME RELATIONSHIP TO FINISHED GRADE AS ORIGINAL GRADE BEFORE DIGGING. TREES AND SHRUBS SHALL HAVE A FINISH GRADE OF +1 INCH MAXIMUM TO ORIGINAL GRADE.
12. REFER TO SPEEDWAY SPECIFICATIONS SECTION 329200 - "TURF AND GRASSES" AND SECTION 329300 - "PLANTS" FOR TYPES OF MULCHES TO BE USED ON SITE.
13. TREES ARE TO BE A MINIMUM OF 3 FEET AWAY FROM ANY HARDSCAPE FEATURE SUCH AS CURBS, WALKS, ETC. TREES SHALL HAVE A ROOT BARRIER SYSTEM IF WITHIN 3-5 FEET OF ANY HARDSCAPE FEATURE.
14. MAINTAIN 3 FEET MINIMUM FROM THE NEAREST DRIPLINE/ROOT BALL EDGE OF PLANTED TREES TO THE NEAREST EDGE OF ANY UTILITY LINES. THE LANDSCAPE CONTRACTOR SHALL VERIFY THE LOCATION OF ALL UTILITY LINES PRIOR TO COMMENCING WORK AND PROVIDE A ROOT BARRIER SYSTEM FOR TREES WITHIN 3-5 FEET OF UTILITY LINES.
15. ALL AREAS NOTED "GRADE AND SEED" AND "MULCHED PLANT BED" WILL RECEIVE TOP SOIL AS INDICATED IN SPEEDWAY SPECIFICATIONS. FOR NON-IRRIGATION SITES, WATER LAWN FOR 30 DAYS POST TURNOVER DATE.
16. ALL PLANTS SHALL BE SPRAYED WITH AN ANTIDESSICANT AND WATERED THOROUGHLY TWICE DURING THE FIRST 24-HOUR PERIOD AFTER PLANTING.
17. AN APPROVED PRE-EMERGENT HERBICIDE SHALL BE APPLIED IN ALL PLANTING AND GROUND COVER BEDS AT RATES SPECIFIED BY MANUFACTURER FOR EACH VARIETY OF PLANT.
18. ALL STORM WATER DETENTION BASINS SHALL HAVE GRASS COVERAGE UNLESS LOCAL CODE DICTATES OTHER TYPE OF VEGETATION TREATMENT OR AS CALLED OUT ON THE LANDSCAPING PLAN.



TREE PLANTING
NOT TO SCALE

RAGAN SMITH
LAND PLANNERS • CIVIL ENGINEERS
LANDSCAPE ARCHITECTS • SURVEYORS
CHATTANOOGA
1015 N. W. 10TH STREET
CHATTANOOGA, TN 37405
(423) 244-8561
www.ragan-smith.com

SUMMERLYN - SECTION 2
FOR
THE JONES COMPANY
TOWN OF NOLENSVILLE, WILLIAMSON COUNTY, TN

WK. ORDER	07-01-2015 (D.R.S)	REV. PER CITY COMMENTS
15-074	0253	

DESIGNED:	B. SMITH
DRAWN:	K. KORNGOLD
SCALE:	1"=60'
DATE:	JUNE 9, 2015

STREET TREE PLAN

5 OF 5

DATE PLOTTED: 07/01/2015 10:00:00 AM
PLOTTER: HP PLOTTER
SCALE: 1"=60'
DRAWN BY: K. KORNGOLD
CHECKED BY: B. SMITH
DATE: 06/09/2015