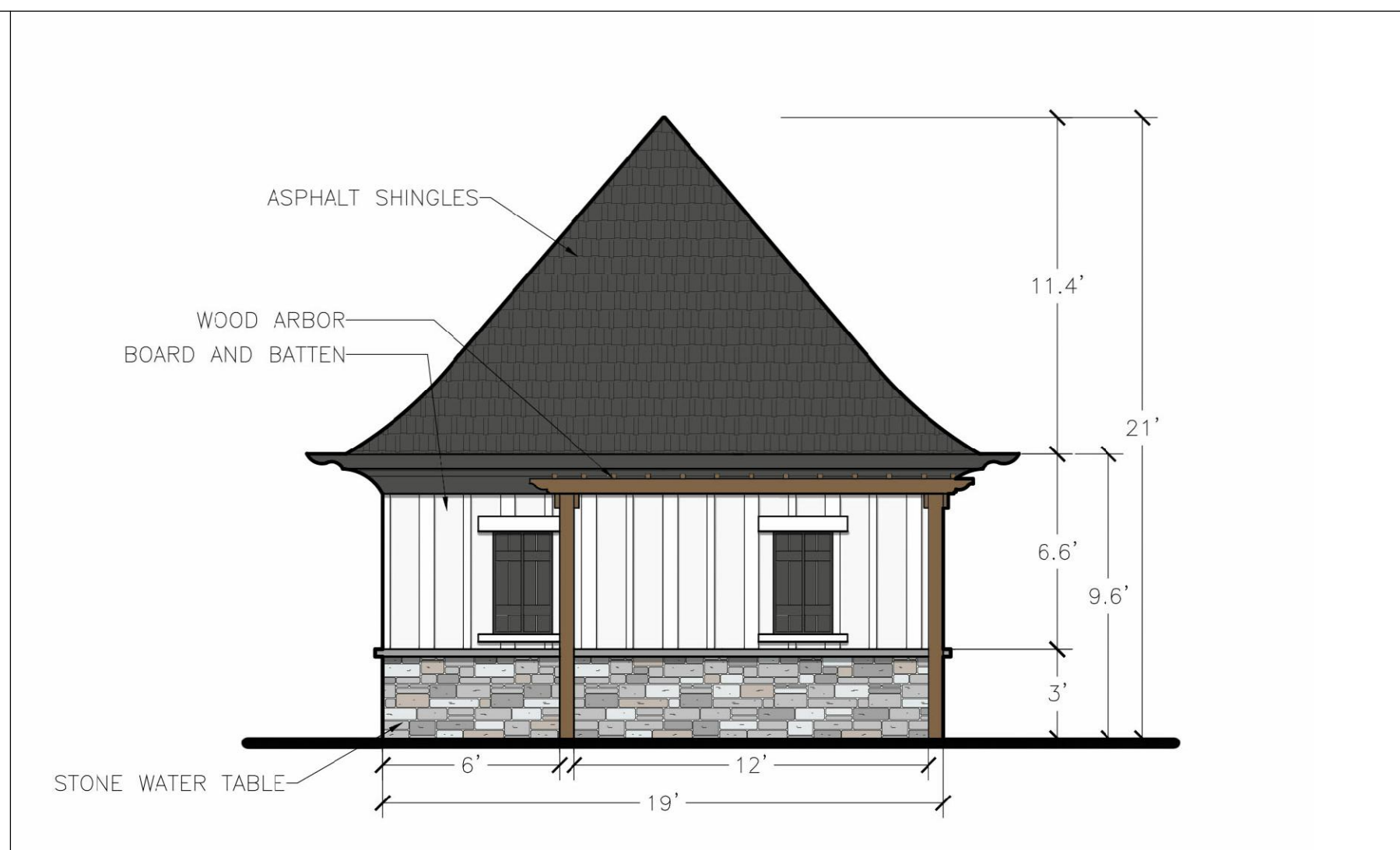
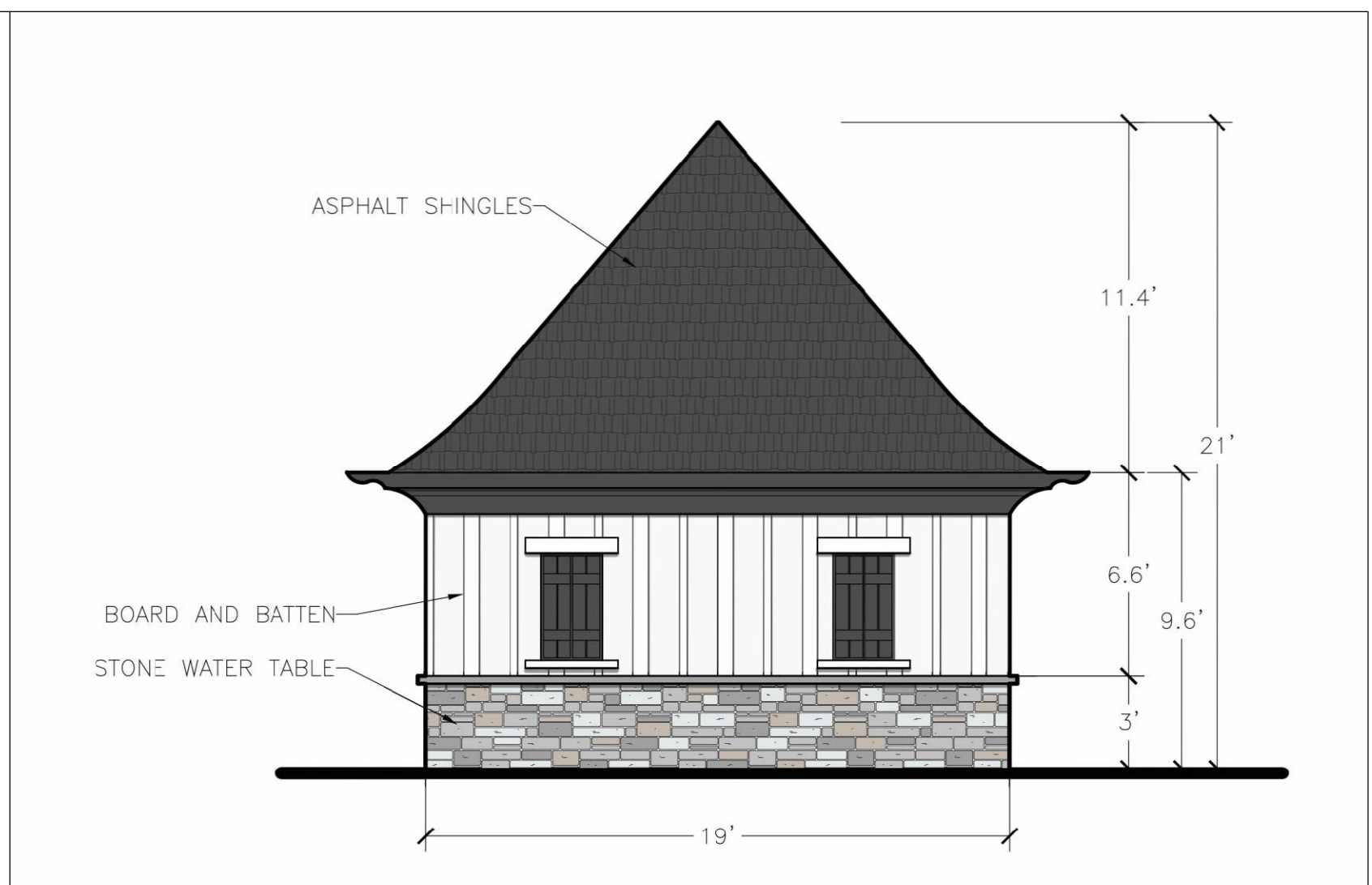


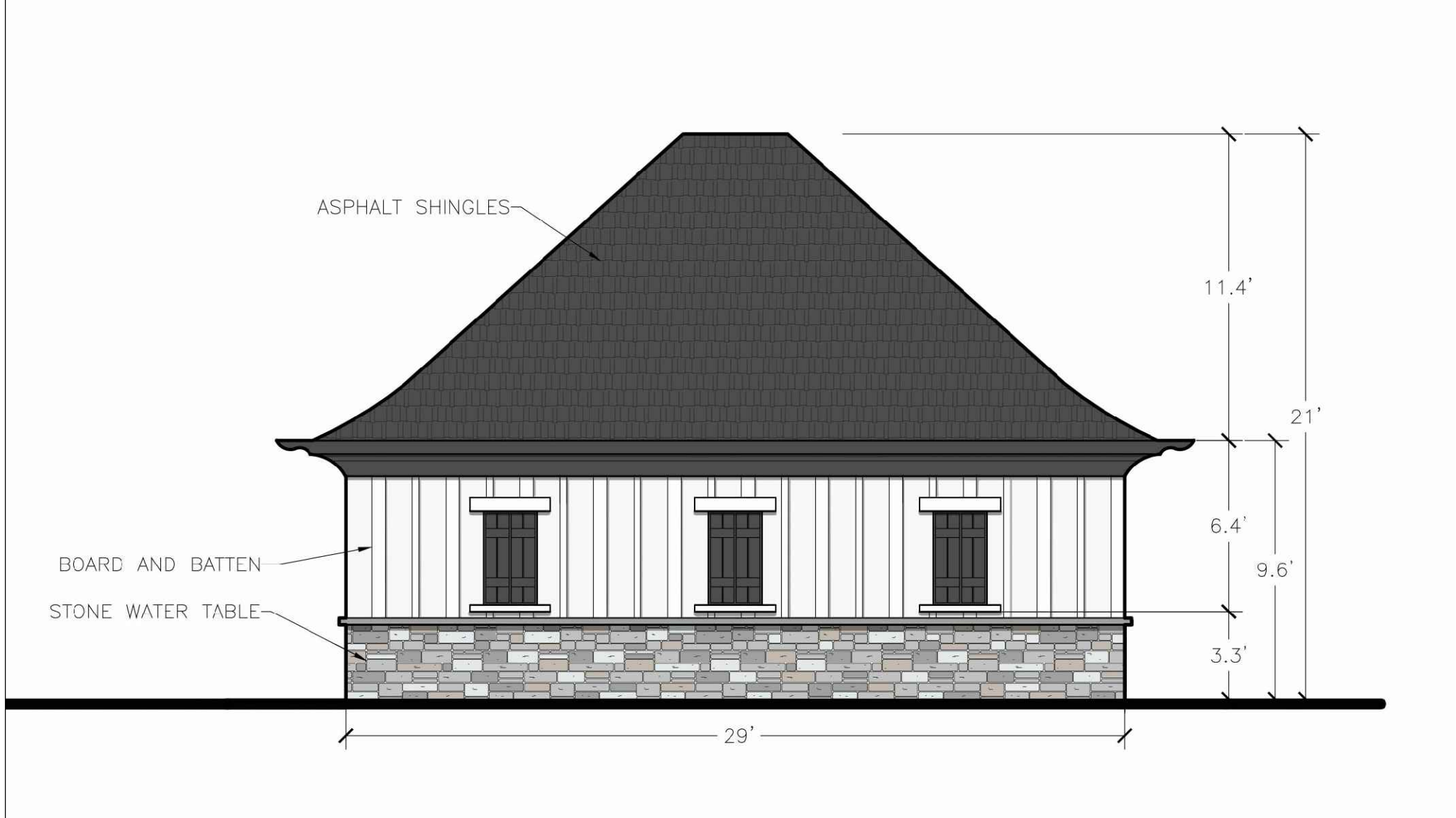
A1 SOUTH POOL HOUSE ELEVATION
 1" = 5'



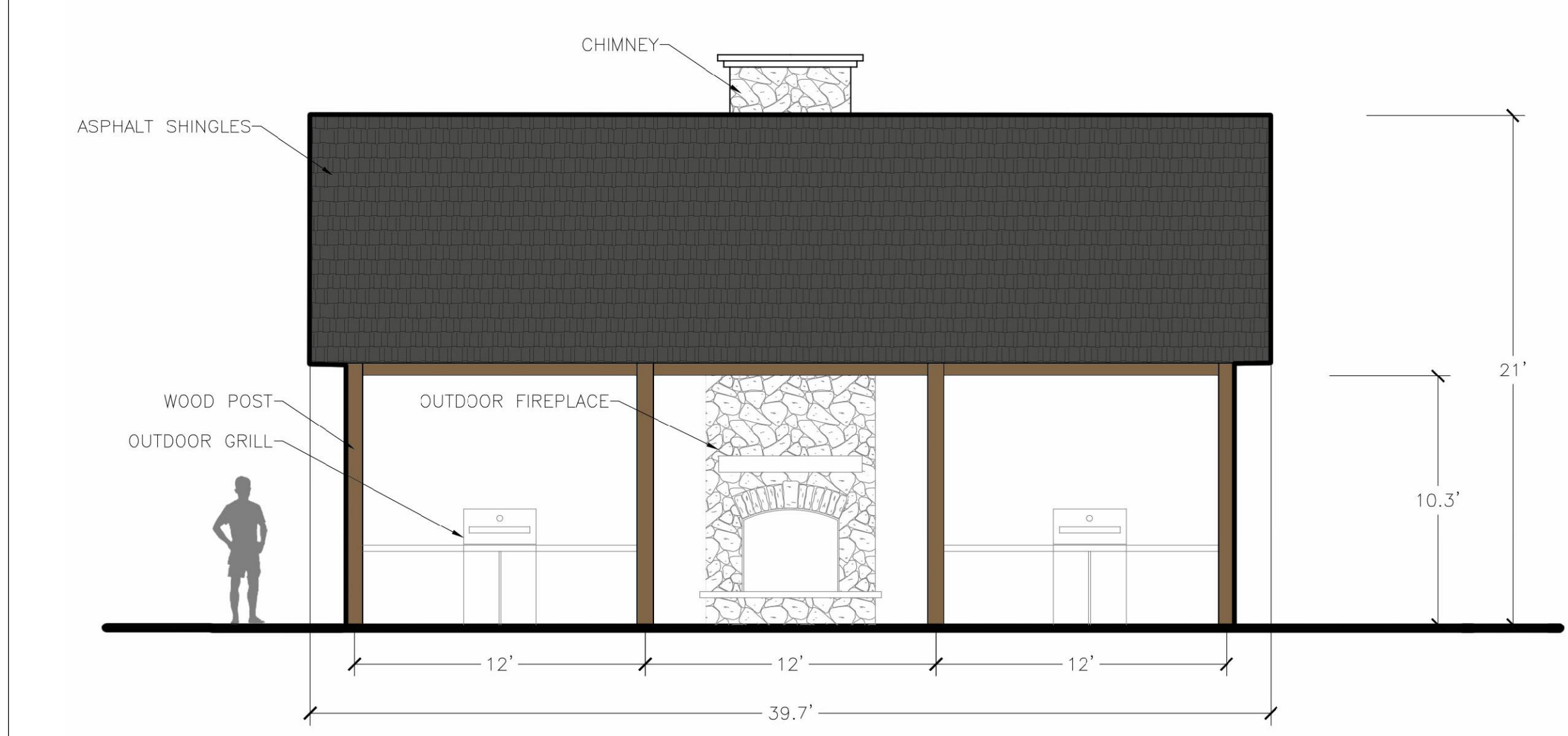
A2 WEST POOL HOUSE ELEVATION
 1" = 5'



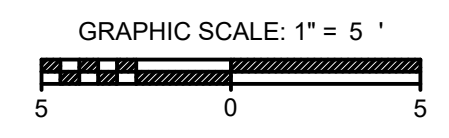
A3 EAST POOL HOUSE ELEVATION
 1" = 5'



A4 NORTH POOL HOUSE ELEVATION
 1" = 5'



A5 PAVILION ELEVATION
 1" = 5'



TELFAIR AMENITIES AREA
 FOR
CCD OLDSMITH SINGELTON LLC
 TOWN OF NOLENSVILLE, WILLIAMSON COUNTY, TENNESSEE

WK. ORDER	0356	DESIGNED:	A. DINGLER	DRAWN:	A. DINGLER	SCALE:	1"=5'	DATE:	APRIL 09, 2019	REV.	DESCRIPTION:
JOB NO.	15130										

ARCHITECTURAL CHARACTER

C7.0

OLD SMITH ARCHITECTS ARCHITECTURAL CHARACTER CHARACTER C7.0
 PLOTTED BY: REVISED ON: 03/27/2019 10:44 AM