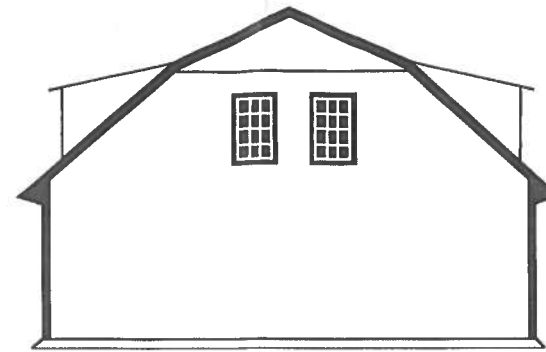


Owners: Jared and Jenny Sciuolo DBA 2709 Greystone LLC  
 contact: 615 636 7501  
 email: j@phivestarr.com

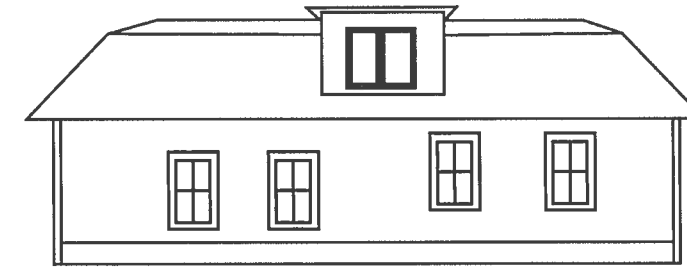
# 7305 Nolensville Road



40 FT  
EXISTING FRONT ELEVATION



40 FT  
EXISTING REAR ELEVATION



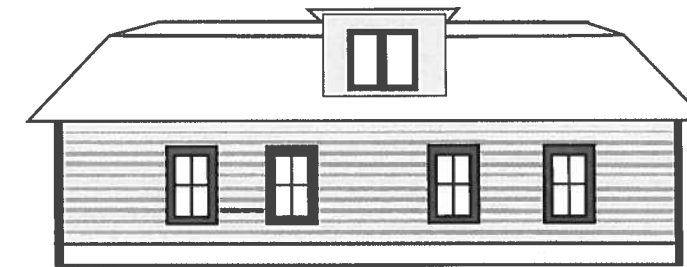
50 FT  
EXISTING SIDE ELEVATION



40 FT  
NEW FRONT ELEVATION



40 FT  
NEW REAR ELEVATION



50 FT  
NEW SIDE ELEVATION

### Repairs that NEED to be made to preserve building.

1. Replace siding with 7.25 Hardie Plank Siding. Color will be matched to old siding.  
Repair or replace all rotten or damaged exterior walls.  
Board and Batten on the top peaks.
2. Replace roof with a similar metal roofing material. Same color or a dark metal  
Repair or replace all rotten attic joists, fascia, and soffits.
3. Replace all windows with energy efficient windows. Windows will be similar style and look.
4. Add a rear exit door. The building originally had a door there. It has been closed up.

### Repairs we would LIKE to make.

1. Bring side windows to the same elevation.
2. Replace front doors with ADA accessible Glass Door.
3. Replace Garage door with a new operable door.



Front Door Example



Hardie Plank Example



Board and Batten Example



Roof Example Option 1



Roof Example Option 2



Garage Door Example