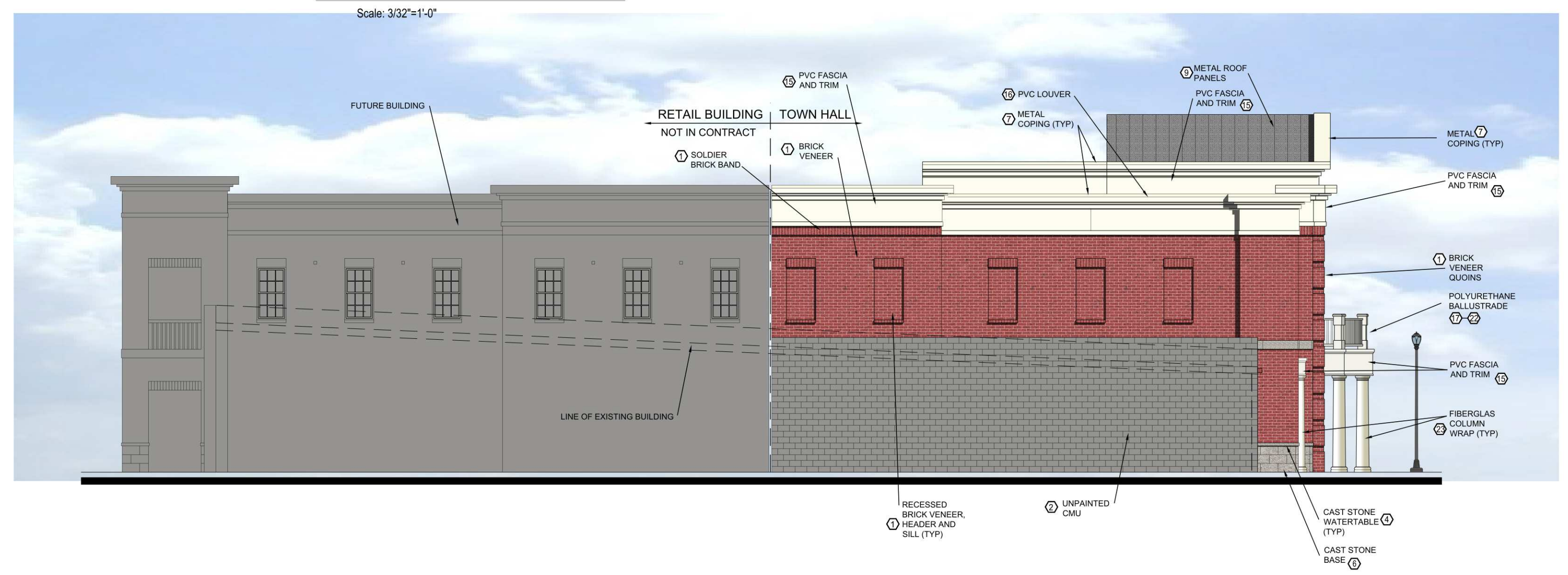
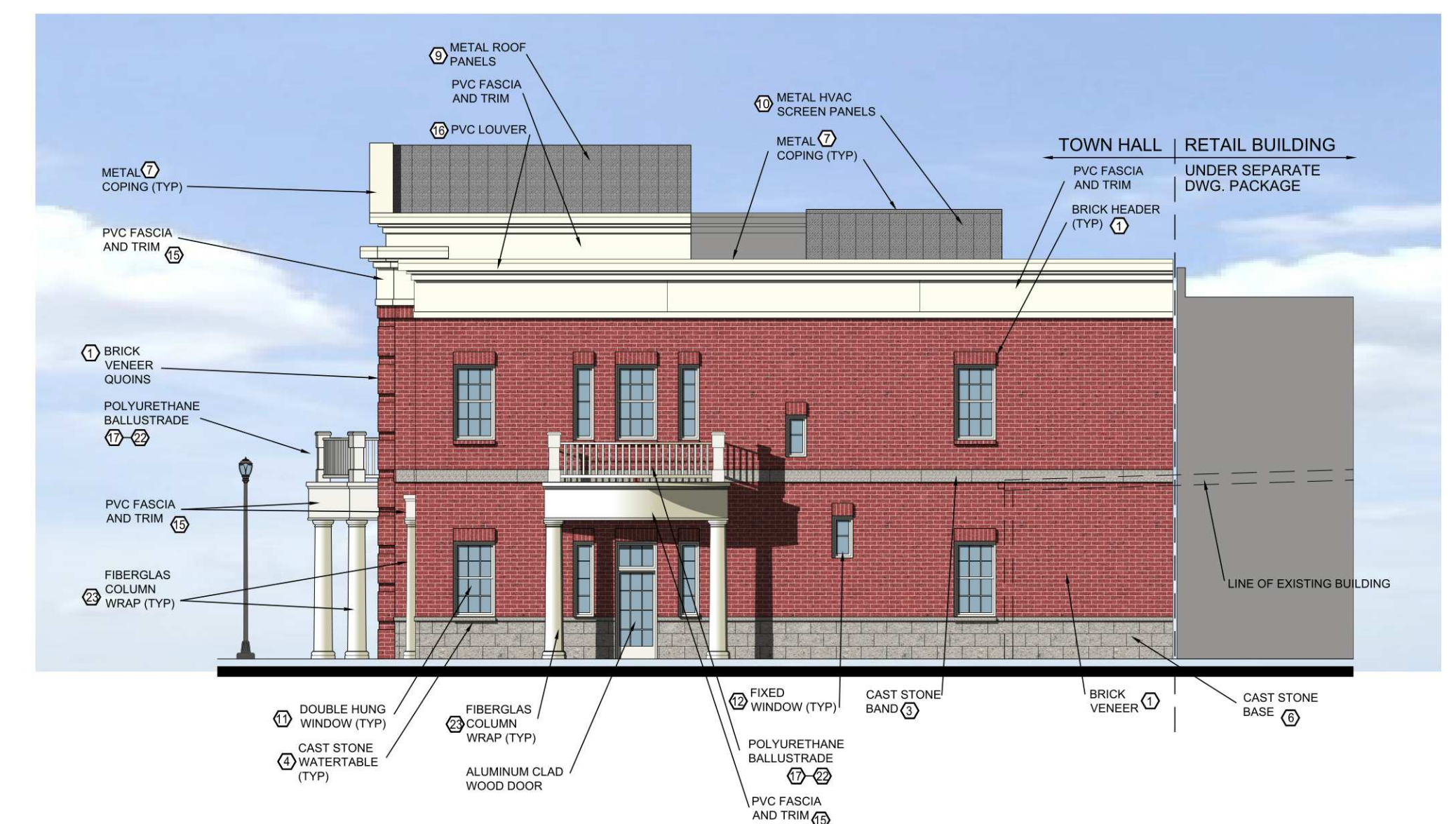


1. SOUTH ELEVATION

FINISH LEGEND	
	MATERIAL
<b>MASONRY</b>	
①	BRICK AUTUMN BLEND UTILITY TAYLOR CLAY PRODUCTS
④A	313 PINK WIRECUT UTILITY
②	CMU
<b>CAST STONE</b>	
③	CONTINENTAL CAST STONE BAND # 1112 SMOOTH, WAT41CS / WAT41CR / WAT41CL
④	WATERTABLE #1112 SMOOTH, SUR11FS1 / SUR11FR1 / SUR11FL1
⑤	KEYSTONE #1112 SMOOTH, KEY61CS
⑥	BASE #1112 ROCKFACE, WAT41FS / WAT41FR / WAT41FL
<b>PREFINISHED METAL</b>	
⑦	BERRIDGE
⑧	COPING, KYNAR, ALMOND
⑨	DOWNSPOUT, KYNAR, ALMOND
⑩	ROOF, HIGH SEAM TEE-PANEL, KYNAR, ZINK GREY SIDING, FLUSH SEAM PANEL, KYNAR, ALMOND
<b>WINDOWS</b>	
⑪	MARVIN
⑫	FIBERGLAS / WOOD INTEGRITY DOUBLE HUNG ALUMINUM CLAD WOOD STATIONARY CASEMENT
<b>DOORS</b>	
⑬	SOLID WOOD
⑭	MARVIN
<b>TRIM AND FASCIA</b>	
⑮	FYPON
⑯	PVC SHEETS AND BOARDS LOUVER FLV32X16
<b>BALLUSTRADE</b>	
⑰	FYPON
⑱	POLYURETHANE NEWEL POST NP12X48
⑲	POLYURETHANE NEWEL POST TOP PST14X14F
⑲	POLYURETHANE TOP RAIL (RADIUS & STRAIGHT)
⑲	POLYURETHANE BOTTOM RAIL (RADIUS & STRAIGHT)
⑲	POLYURETHANE RAIL SUPPORT BLOCK
⑲	POLYURETHANE BALLUSTER BALZ32SQ
<b>COLUMN WRAPS</b>	
⑳	CROWN PLAIN TAPERED ROUND FIBERGLAS WITH TUSCAN CAPITAL AND BASE
<b>PAINT</b>	
⑳	PVC TRIM AND FASCIA - PAINT WITH 100% ACRYLIC, LRV 55 OR GREATER, MATCH WINDOW FRAMES POLYURETHANE BALLUSTRADE - PAINT PER MANUFACTURER'S RECOMMENDATIONS TO MATCH TRIM AND FASCIA FIBERGLAS COLUMN WRAPS - PAINT PER MANUFACTURER'S RECOMMENDATIONS TO MATCH TRIM AND FASCIA MISC. STEEL, PAINT TO MATCH ADJACENT MATERIAL



3. WEST ELEVATION



4. EAST ELEVATION

Revisions

HMH Job Number  
08055TH

Drawn By  
CF

Date  
02-11-09

Drawing

P.C. SUBMITTAL

PC-1